

**Workmaster™**



# WORKMASTER™

Super Duty Ladder



PATENTE  
Pat. # US 9,206,643 B2

WMX05R37A9P3

# Workmaster™ super-duty rolling metal ladders

## FIRST

# 1

### LADDER DIMENSIONS

# THING'S FIRST

HOW TO SELECT THE CORRECT LADDER!



**Working height** is the approximate height that you would like to be able to comfortably reach. It is usually calculated at 5.5' above the ladder's platform height.



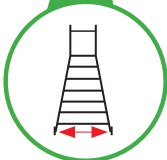
**Overall height** is VERY important. You want to be sure that your ladder will not be too tall to fit into your workspace. This includes being able to fit through any doors that you may need to move it through, or under any ceilings or fixtures that you may have.



**Top Step height** is the measurement of the top step from the ground. It's important that this measurement is not too far above or below your desired working height.



**Base length** is the measurement of how long the base of the ladder runs. This is dependent upon the height of the ladder. The taller the ladder, the longer the base.



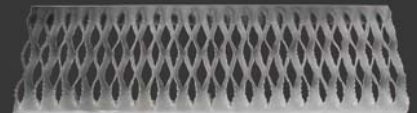
**Base width** is also very important because as ladders get taller, the base width increases. It is important to be sure that the ladder will not be too wide for your workspace.

# 2

### TREAD TYPES



**Perforated (A9)**



**Serrated (A3)**

# 3

### GATE OPTION



**Optional Safety Gate**  
Available on all 4 sides of the platform.

# Super Duty

## Rolling Steel Ladder

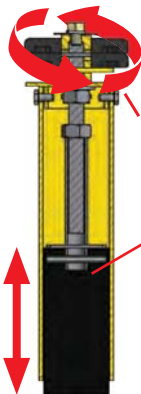
For the workspace that demands the toughest ladder, the Super Duty Workmaster™ ladder.

Every day, work is done where equipment needs to be able to take a beating and keep working. For the toughest jobs, Cotterman® introduces the Super Duty Workmaster™ ladder. Built with extra heavy duty components, the Workmaster™ ladder is resistant to bumps and dings in harsh work environments.

- 1,000 lb. load rating.
- 59° climb angle.
- 1½" diameter x 14 gauge tube construction.
- 24" x 24" platform with optional self-closing gates (available for all 4 sides of platform).
- Adjustable front legs level the ladder.
- Two-tone powder coat finish creates high visibility.
- Standard back peg board.
- Workmaster™ Super Duty ladders meet applicable OSHA and ANSI standards.



Modular Front Leg and SafeLock Field Replaceable, Adjustable Front Legs that level the Ladder



Easily adjust Rubber Foot Pad to level the ladder or compensate for wear

2" x 2" x 5" Adjustable Rubber Foot Pad



### Workmaster™ Super-Duty Ladder MODEL NUMBERS & MEASUREMENTS

**LOAD RATING  
1,000 LBS.**



DESCRIPTION	TOP STEP HEIGHT	OVERALL HEIGHT	WORKING HEIGHT (approx.)	SERRATED TREAD				OPEN GRIP TREAD			
				MODEL NUMBER	BASE WIDTH	BASE LENGTH	SHP. WT. LBS.	MODEL NUMBER	BASE WIDTH	BASE LENGTH	SHP. WT. LBS.
5 STEP WITH HANDRAILS	50"	80"	116"	WMX05R37A3P3	37"	56"	297	WMX05R37A9P3	37"	56"	301
6 STEP WITH HANDRAILS	60"	90"	126"	WMX06R37A3P3	37"	62"	314	WMX06R37A9P3	37"	62"	318
7 STEP WITH HANDRAILS	70"	100"	136"	WMX07R37A3P3	37"	68"	343	WMX07R37A9P3	37"	68"	347
8 STEP WITH HANDRAILS	80"	110"	146"	WMX08R37A3P3	37"	74"	360	WMX08R37A9P3	37"	74"	364
9 STEP WITH HANDRAILS	90"	120"	156"	WMX09R37A3P3	37"	80"	380	WMX09R37A9P3	37"	80"	384
10 STEP WITH HANDRAILS	100"	130"	166"	WMX10R37A3P3	37"	86"	397	WMX10R37A9P3	37"	86"	401
11 STEP WITH HANDRAILS	110"	140"	176"	WMX11R42A3P3	42"	92"	423	WMX11R42A9P3	42"	92"	427
12 STEP WITH HANDRAILS	120"	150"	186"	WMX12R42A3P3	42"	98"	440	WMX12R42A9P3	42"	98"	444

# Workmaster™



## aluminum Workmaster™ Super-Duty Ladder

**THE COTTERMAN® ALUMINUM WORKMASTER™** is a lightweight, Super Duty ladder that can be easily moved from job to job. It's sturdy aluminum construction allows for a 500 lb. load rating and can handle the rigors of a rough or tough work environment.

- 1½" diameter x 14 gauge tube construction.
- Adjustable steel front legs level the ladder.
- 24" x 24" platform.
- Workmaster™ Super Duty ladder meet applicable OSHA and ANSI standards.



### Serrated (A3)

Open step serrated surface.  
For rugged applications.



## Aluminum Workmaster™ Super-Duty Ladder

MODEL NUMBERS & MEASUREMENTS

**LOAD RATING  
500 LBS.**

DESCRIPTION	TOP STEP HEIGHT	OVERALL HEIGHT	WORKING HEIGHT (approx.)	GRIP STRUT TREAD			
				MODEL NUMBER	BASE WIDTH	BASE LENGTH	SHR. WT. LBS.
5 STEP WITH HANDRAILS	50"	80"	116"	WMXA05R37A3P3	37"	56"	175
6 STEP WITH HANDRAILS	60"	90"	126"	WMXA06R37A3P3	37"	62"	210
7 STEP WITH HANDRAILS	70"	100"	136"	WMXA07R37A3P3	37"	68"	245
8 STEP WITH HANDRAILS	80"	110"	146"	WMXA08R37A3P3	37"	74"	280
9 STEP WITH HANDRAILS	90"	120"	156"	WMXA09R37A3P3	37"	80"	315
10 STEP WITH HANDRAILS	100"	130"	166"	WMXA10R37A3P3	37"	86"	350
11 STEP WITH HANDRAILS	110"	140"	176"	WMXA11R42A3P3	42"	92"	385
12 STEP WITH HANDRAILS	120"	150"	186"	WMXA12R42A3P3	42"	98"	420



Jamieson Equipment Company  
www.jamiesonequipment.com  
toll free 800.875.0280